

N.E.1/4 OF N.E 1/4 OF SECTION 4, T.6N., R.1W., S.L.B. & M.

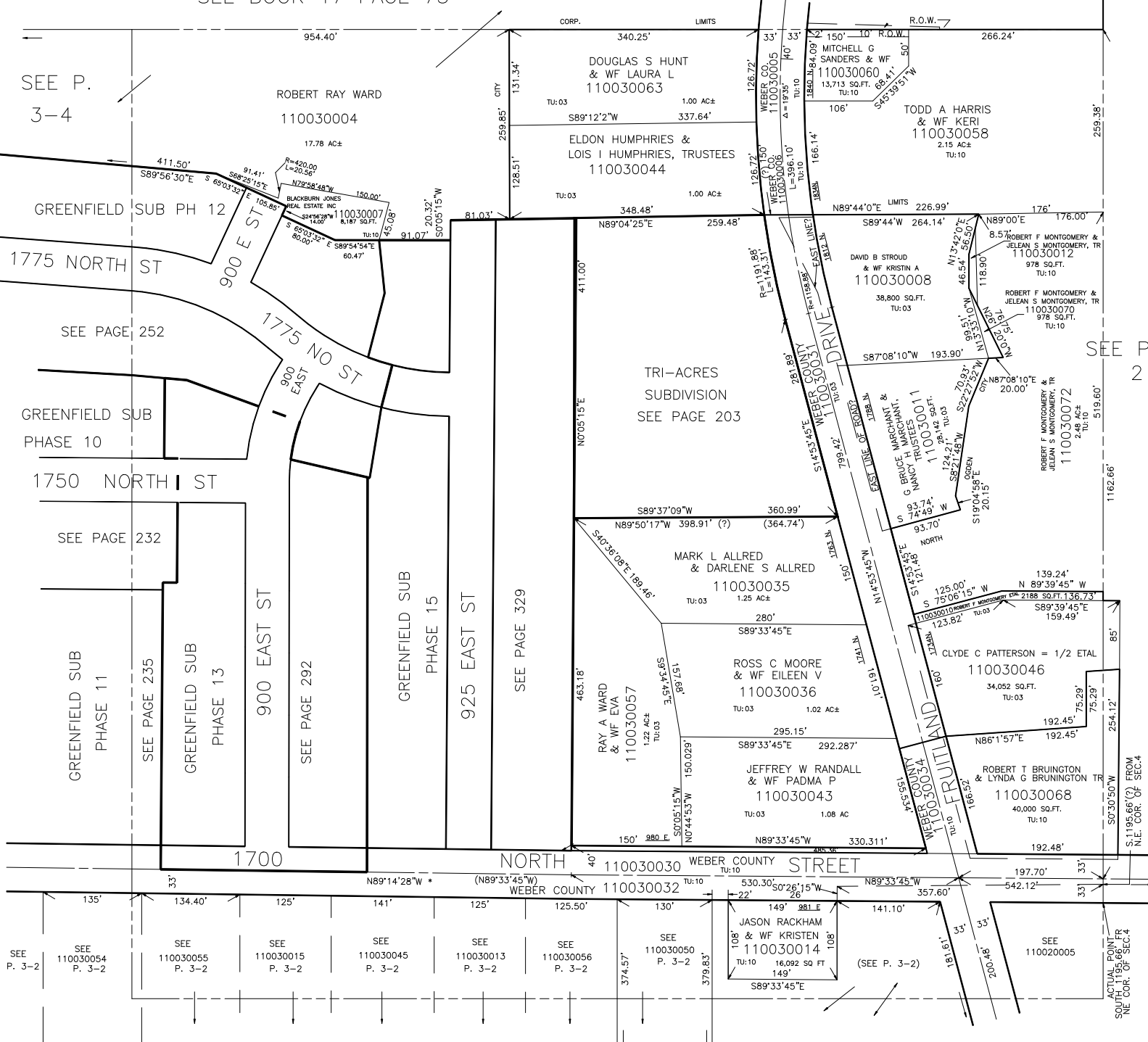
TAXING UNIT: 03,10

IN NORTH OGDEN CITY & WEBER COUNTY

PREFIX: 11-003 ALSO SEE PAGES 3-2,3,4

SEE BOOK 17 PAGE 75

SCALE 1" = 100'



SEE P. 3-4

SEE PAGE 252

SEE PAGE 232

SEE PAGE 235

SEE P. 3-2

SEE 110030054 P. 3-2

SEE 110030055 P. 3-2

SEE 110030015 P. 3-2

SEE 110030045 P. 3-2

SEE 110030013 P. 3-2

SEE 110030056 P. 3-2

SEE 110030050 P. 3-2

SEE 110030014 (SEE P. 3-2)

SEE 110020005

NOTE : DATA FOR MOUNTAIN ROAD & FRUITLAND DRIVE TAKEN FROM COUNTY SURVEYOR'S MAPS, MAR. 1963

SEE P. 3-2

* 1700 N. ST. ALIGNMENT 40-12 27-JUN-95

ACTUAL POINT SOUTH 1195.66' FR N.E. COR. OF SEC. 4